



AMO WPT for automotive

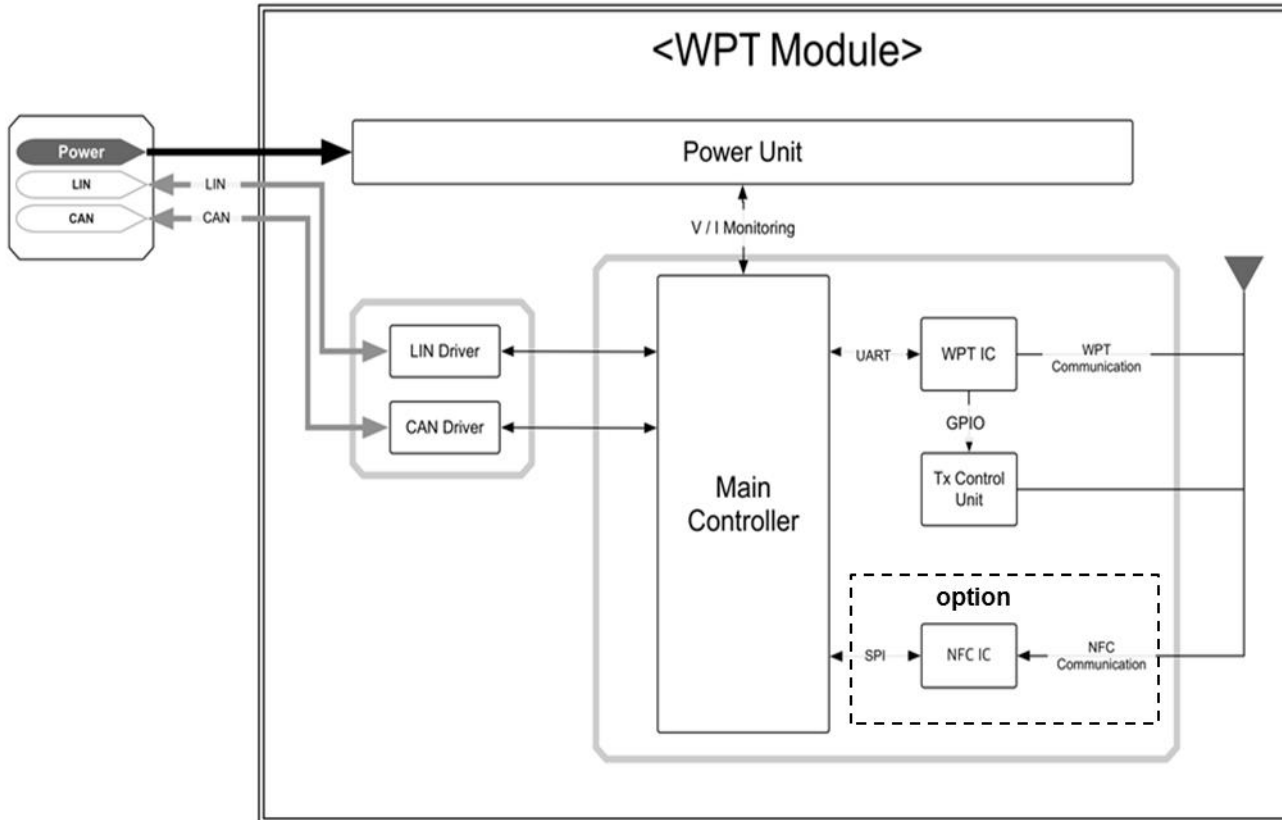


CONTENTS

- **WPT for Mobile phone**
- **WPT for Rear lamp**
- **WPT for Side mirror**
- **Application**

WPT for automotive

- A13 WPT_H/W block diagram



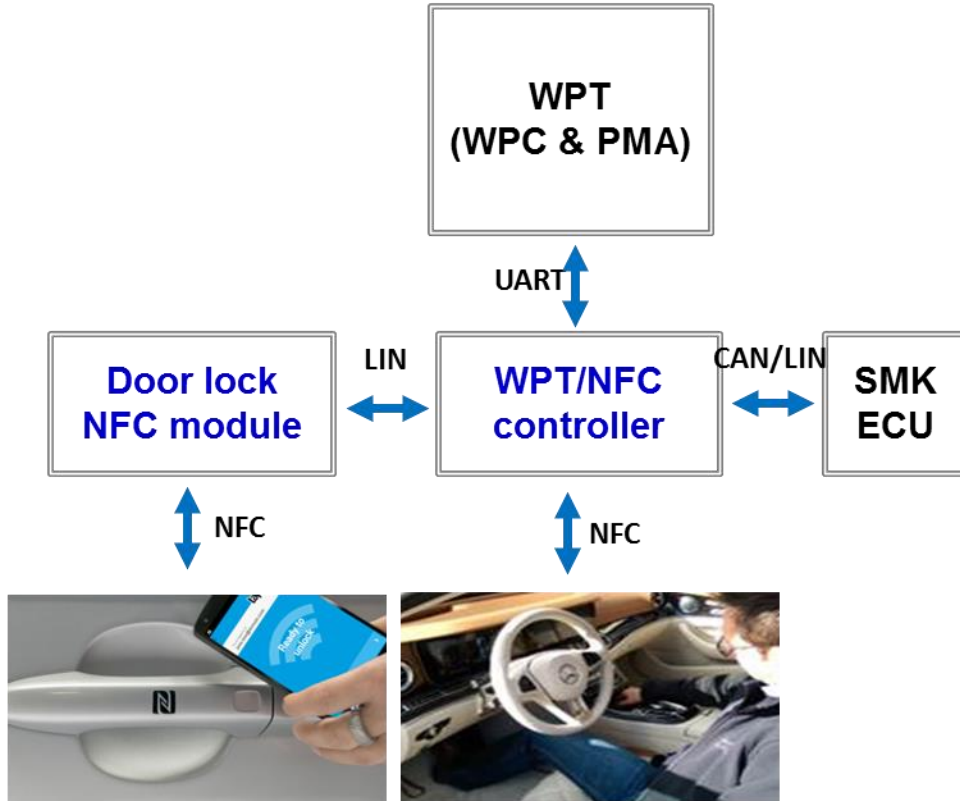
*** PCB design**

[Top] [Bottom]

*** A13 mock-up sample**

WPT for mobile phone

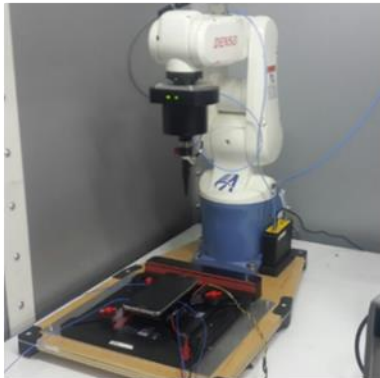
- WPT & NFC combo



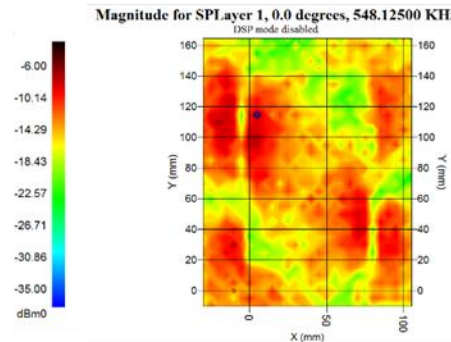
Item		Spec.
WPT	Mode	WPC + PMA
	Frequency	125kHz(Fixed)
NFC	Frequency	13.56MHz
	Protocol	ISO14443/ISO18092

WPT for mobile phone

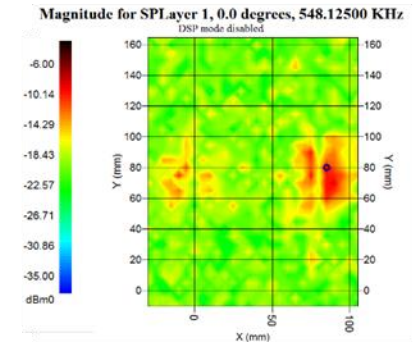
- EMI shield test



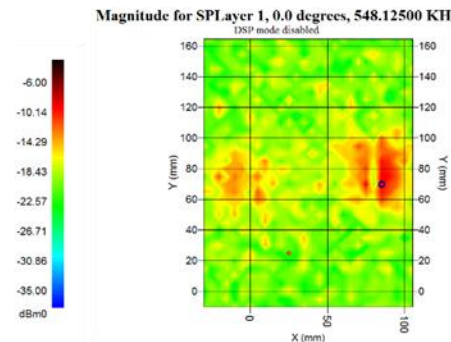
Sendust



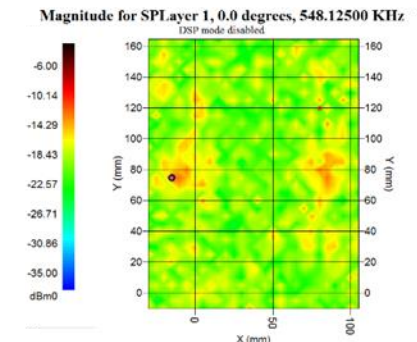
Amorphous



MnZn

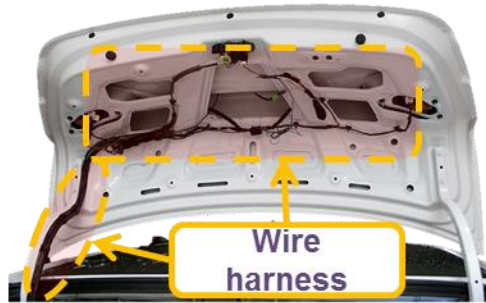
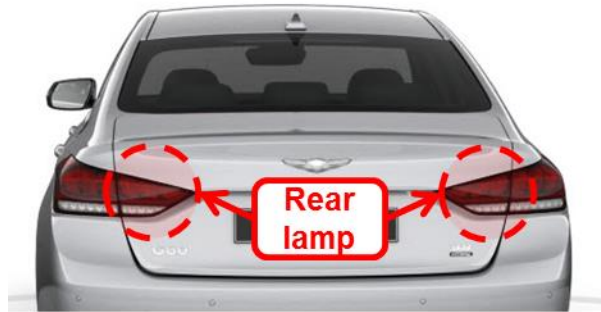


Hybrid NiZn



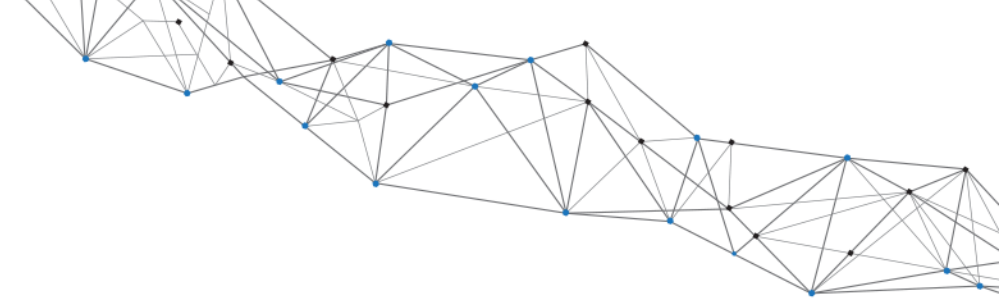
- Rx : Galaxy Note 5 (Load : 1000mA)
- Scanning frequency : 500kHz ~ 1MHz
- Electromagnetic scanning system : EM-Isight-4

WPT for rear lamp



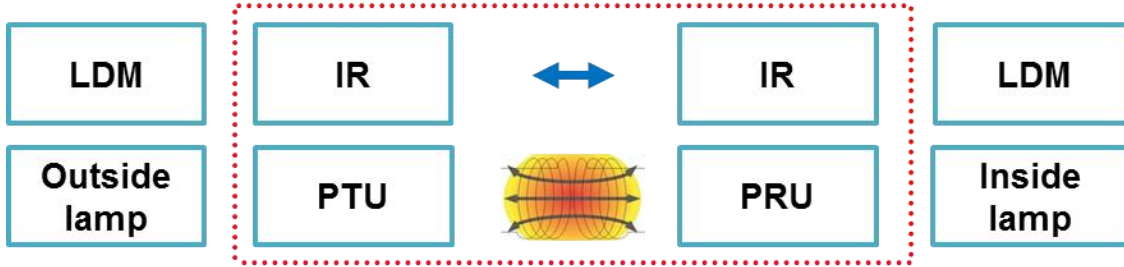
By considering car design, there is increase in rear lamp :
To connect the lamp with wire harness in the car trunk

↓
There is increase in
the cost of harness and weight
to proceed with the lamp operation



WPT for rear lamp

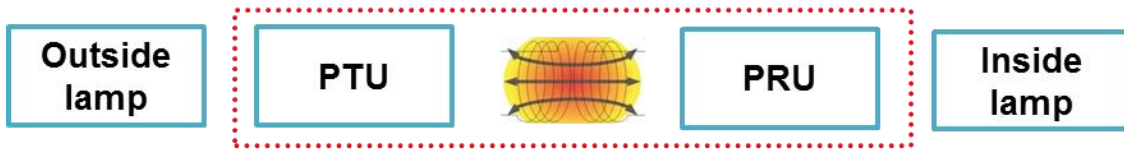
• System diagram



Type_1

To control inside lamp such as stop or turn by LDM

↓
Two-way wireless communication
Speed requirement for safe response
High-cost / high-end



Type_2

Not to control inside lamp / To operate back-up lamp

↓
Simple function as power transmission
Low-cost



represented/distributed by

MRC GIGACOMP 
specialists in RF

www.mrc-gigacomp.com
info@mrc-gigacomp.com

Office Address:
Bahnhofstr. 1
85354 Freising
Tel: +49 8161 9848-0
Fax: +49 8161 9848-20