

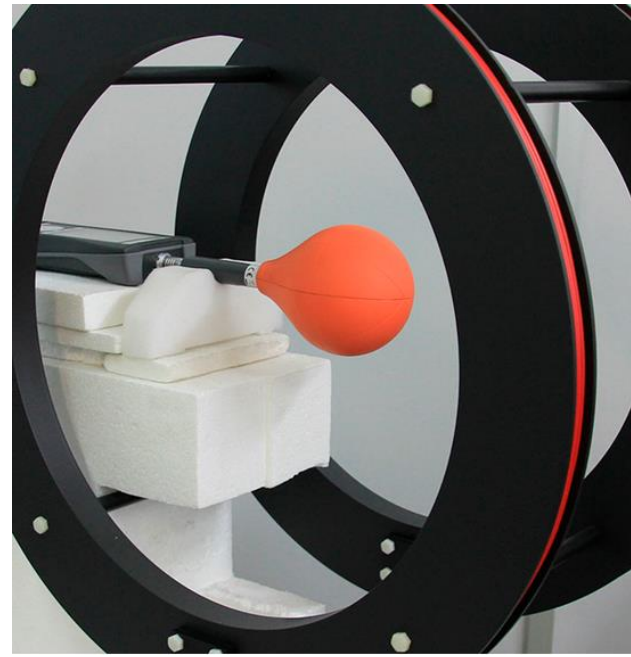
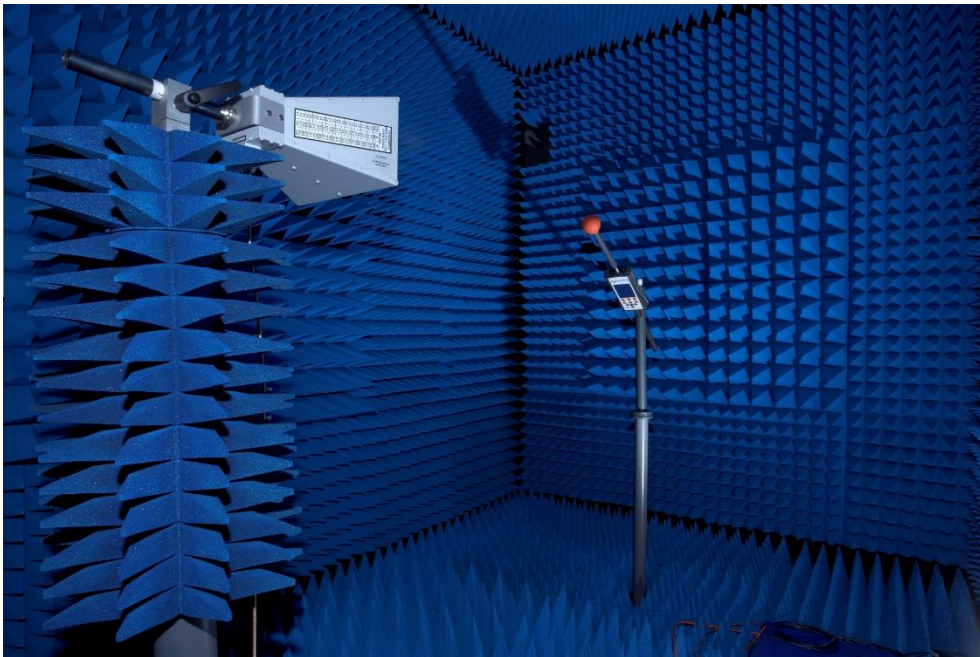
WAVECONTROL

Safety, Quality, Service

LabCal Wavecontrol



- ISO 17025 accredited field probe calibration laboratory.
- All equipment delivered with accredited calibration under LabCal scope.
- Calibration services for 3rd party products.
- ILAC accredited calibration accepted Worldwide.



PORTABLE

Portable Meters

- SMP2



MONITORS

Area Monitors

- MonitEM
- MonitEM - LAB
- cMonitEM



PERSONAL

Personal Protective Equipment

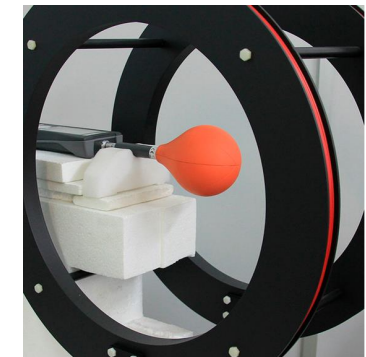
- WaveMON



SERVICES

Available Services

- Calibrations
- Workshops
- Trainings



SMP2: Electromagnetic Field Meter



2 INSTRUMENTS IN 1: Minimize your investment

Broadband measurement
(1 Hz - 40 GHz).
Spectrum analysis - FFT
(1 Hz - 400 kHz).

Integrated GPS
(optional)

Weighted Peak Method (WPM)

check compliance with all the
standard limits



Probes: Isotropic, Linear, RMS ...

High-accuracy field probes.

1 Hz – 40 GHz

Delivered with accredited Calibration
(acc. to LabCal scope)

One Single Meter for all probes

Easy steps for a compliant assessment of standards

ICNIRP, EU, USA, Canada, China, ...

All standard limits embedded inside
meter

USB, Fiber Optic

Download measurements for
automatic report.

Remote control.

[YouTube Video Link](#)



Field probes



Low frequency field probes

WP400: 1 Hz – 400 kHz (E & H & FFT+ WPM)
WP400-3: 1 Hz – 400 kHz (E & H & FFT+ WPM)
WP50: 10 Hz – 3 kHz (E & H)

High frequency field probes

WPF3: 100 kHz – 3 GHz (E Field)
WPF6: 100 kHz – 6 GHz (E Field)
WPF8: 100 kHz – 8 GHz (E Field)
WPF18: 300 kHz – 18 GHz (E Field)
WPF40: 20 MHz - 40 GHz (E Field)

Mobile bands field probe

WPT: GSM, UMTS, LTE (E Field)

Magnetic field probes

WPH60: 300 kHz – 60 MHz (H Field)
WPH1000: 30 MHz – 1000 MHz (H Field)

**Fast Response included in
WPF18 and WPF40:
For Radar applications**

**HP (High Power) Option:
For High Field applications**



MonitEM-Lab: Indoor Area Monitor



Continuous monitoring 24/365

Alarms in real time



Visual



Audible

Ethernet communication with PC software and control center



Broadband measurement allows an easy monitoring of EMF human exposure

Easy to install
AC supply and Ethernet communication

Compliance with ITU-T K.83 direct, easy and comprehensible comparison with regulated limits

MonitEM-Lab: How does it work?



AREA TO MONITOR

- Workers' safety
- RF testing
- High power test benches
- Production & Manufacturing plants



EMF Sources:

- Magnetic & Electric
- Induction
- Electrical
- RF
- Microwave
- ...



- MonitEM-Lab measures electromagnetic fields continuously (24hx7d)
- User defines safe threshold level to trigger alarms

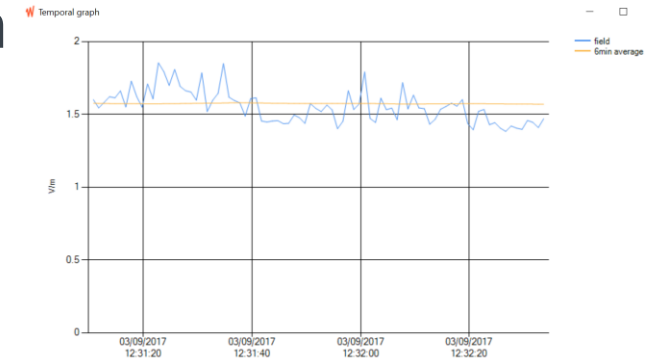
Visual Alarm



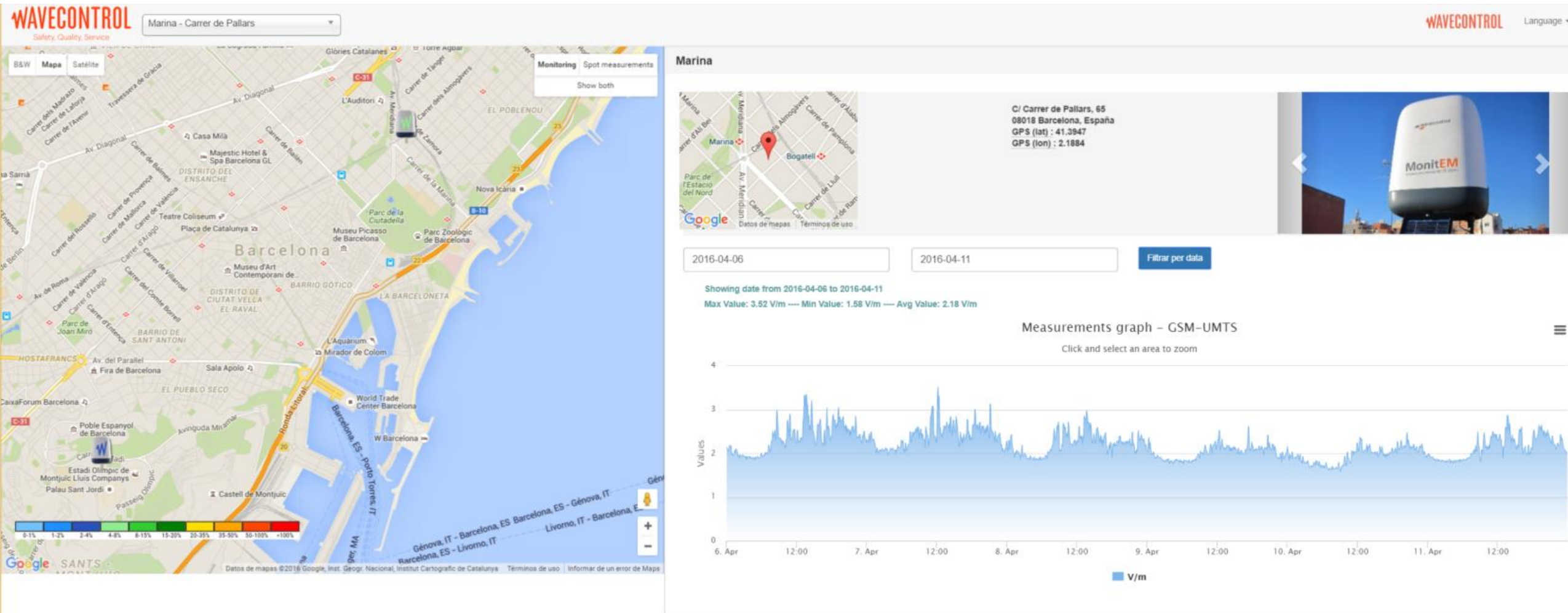
Audible Alarm



- Real time graph



MonitEM: Control Center



WaveMon: Personal Protective Equipment



Wearable

One hand Operation

Adjustable
Threshold Levels

Autonomy
4 months battery autonomy
>1 000 000 events data log



Isotropic and RMS Measurements
Electric and Magnetic Fields
According to International
Standards

6 LEDs indication

Software

USB & Tripod connectors

represented/distributed by



www.mrc-gigacomp.com

info@mrc-gigacomp.com

Office Freising:

Bahnhofstr. 1
85354 Freising
Tel: +49 8161 9848-0
Fax: +49 8161 9848-20

Office Bad Aibling:

Grassinger Str. 8
83043 Bad Aibling
Tel: +49 89 4161 599-40
Fax: +49 89 4161 599-45